

NCO CLASS 5

Total Questions: 50

Time: 1 hr.

Section – 1 : Patterns, Analogy and Classification, Geometrical Shapes, Mirror and Water Images, Direction Sense Test, Ranking Test, Alphabet Test, Logical Sequence of Words, Puzzle Test, Coding-Decoding.

Section – 2 : Input and Output Devices, Hardware, Software, Storage Devices, Memory –Primary & Secondary Memory, MS-Paint, Introduction to Multimedia, MS-Word (Paragraph formatting Using Paragraph group, Drop Cap, Document Views, Inserting Graphics-Pictures and Shapes, Screenshots, Symbols, Smart Art, Multimedia Objects, Text Box, Inserting Header and Footer in a document and exploring its features), Introduction to MS-Power Point(Component of MS-Power Point window and its features, Inserting Graphics-Pictures and Shapes, Screenshots, Symbols, Smart Art, Multimedia Objects, Text Box, Inserting Header & Footer and exploring its features, Running slide shows, Presentation Views), Internet, Computer Networks, Using Windows 10, Latest Developments in the Field of IT.

Section – 3 : Higher Order Thinking Questions - Syllabus as per Section – 2.

SECTION 01 LOGICAL REASONING

1. Complete the series: 4, 7, 12, 19, 28
 - A. 49
 - B. 36
 - C. 30
 - D. 39
2. I walk 30 meters in North- west direction from my house and then 30 meters towards South-West direction. After this I walk 30 meters in South- East direction, now I turn to my house, in which direction I am going?
 - A. North East
 - B. North West
 - C. South East
 - D. South West
3. In a certain language PROSE is coded as PPOQE, how is LIGHT coded in that code?
 - A. LIFTE
 - B. LGEFT
 - C. LGGFT
 - D. LGFTG
4. How many times exactly two N's occurs together? M N M M N M N N M N M N N M M N M N M M
 - A. 5
 - B. 4
 - C. 2
 - D. 3
5. Which word does NOT belong with the others?
 - A. inch
 - B. ounce
 - C. centimeter
 - D. yard
6. If $G > N$, $N > C$ and $C > B$, then which of the following is definitely wrong.
 - A. $B > G$
 - B. $G > B$
 - C. $N > B$
 - D. $G > C$
7. CMM, EOO, GQQ, _____, KUU
 - A. GRR
 - B. ISS
 - C. GSS
 - D. IRR



GG RS LEARNING HUB PVT. LTD.

8. Glass is to water as cup is to:
- A. Dish
 - B. tea
 - C. spoon
 - D. food
9. Find the odd one
- A. Teacher
 - B. Principal
 - C. Student
 - D. Lecturer
10. In a certain code, 3415 is coded as SOAP, 15526 is coded as APPLE, then how is 34615 coded?
- A. SPPEO
 - B. SOEAP
 - C. POEAS
 - D. PASEO

SECTION 02 COMPUTER AND INFORMATION TECHNOLOGY

11. What is Full form of GIF?
- A. Graphic Information File
 - B. Graphic Interchange Format
 - C. Graphic Information Format
 - D. Graphic Interchange File
12. How do u describe firewall in a network?
- A. It is the memory unit of a network.
 - B. A network operating system.
 - C. A system preventing unauthorized access to a network.
 - D. It is a web browsing software.
13. Multimedia is used in which of the following fields?
- A. Education
 - B. Advertising
 - C. Playing games
 - D. All of these
14. Find the odd term out.
- A. Pen drive
 - B. CD
 - C. Floppy
 - D. Mouse
15. What is the importance of star icon placed adjacent to the sender name in the inbox of Gmail?
- A. To mark them as spam message.
 - B. To easily mark certain messages as important or to indicate that you need to reply to them later.
 - C. Star marked mail will be deleted after some time automatically.
 - D. Star marked mail will move to trash folder after 30 days.
16. Which option you choose in MS-Paint if you want a closer look to your picture?
- A. Grid
 - B. Zoom in
 - C. Bitmap
 - D. Thumbnail
17. What is a Software?
- A. Virus
 - B. Program
 - C. Output Device
 - D. Input Device
18. RAM is a
- A. Volatile Memory
 - B. Read write memory
 - C. Non-Volatile memory
 - D. Random

19. RAM is which storage device?
- A. Primary
 - B. Secondary
 - C. Tertiary
 - D. Offline
20. To make a word bold we select the word then we press _____?
- A. TAB+B
 - B. CTRL+ B
 - C. ALT+B
 - D. SHIFT+B
21. Computer works on which cycle?
- A. Carbon
 - B. IPO
 - C. PIO
 - D. Oxgen
22. Where are saved files stored in computer?
- A. RAM
 - B. Hard disk
 - C. Cache
 - D. Any of above
23. Short cut key for paste
- A. CTRL+A
 - B. CTRL+S
 - C. CTRL+V
 - D. CTRL+O
24. Who is known as father of computers?
- A. Pascal
 - B. John Napier
 - C. Charles Babbage
 - D. Blaise Pascal
25. Which of the following is a correct internet address?
- A. www.education.com
 - B. www.homework.co
 - C. www.yahoo.com
 - D. www.facebookcomm
26. MS Word is a _____ software.
- A. System software
 - B. Application Software
 - C. Accounting software
 - D. None of these
27. F7 is a shortcut key to check.
- A. Spell check
 - B. Save a document
 - C. Open a document
 - D. None of these
28. What is the full form of ALU?
- A. Arithmetic logic unit
 - B. Arithmetic loose unit
 - C. Arithmetic legal unit
 - D. Arithmetic level unit
29. What is the shortcut key to save document as MS Word?
- A. F5
 - B. F12
 - C. F8
 - D. All of these
30. What is the Full form of URL is?



GG RS LEARNING HUB PVT. LTD.

- A. Unified Resource Link
 - B. Uniform Registered Link
 - C. Uniform Resource Link
 - D. Uniform Resource Locator
31. Which activity mentioned below can be done by a computer?
- A. Play games
 - B. Home work
 - C. Paint
 - D. All of these
32. Which of the following is an example of connectivity?
- A. Internet
 - B. Floppy disk
 - C. Power cord
 - D. Data
33. Data is used in computers in the form of 1's and 0's is called ?
- A. Decimal
 - B. Binary
 - C. Hexadecimal
 - D. Octal
34. 1024 Kilo byte (KB) is equals to .
- A. 1 Nibble
 - B. 1 Megabyte (MB)
 - C. 1 Gigabyte (GB)
 - D. 8 Bits
35. Which of the following is an input device?
- A. Monitor
 - B. Light Pen
 - C. Pendrive
 - D. Speaker
36. Internet can be used in school for ?
- A. Maintaining students record
 - B. Booking Hotels
 - C. Booking tickets
 - D. All of these
37. What is the default extension of PowerPoint Presentation?
- A. .DOC
 - B. .JPG
 - C. .Xls
 - D. .ppsx
38. Secondary storage devices are_____?
- A. Volatile
 - B. Non-volatile
 - C. Both A & B
 - D. None of these
39. The primary purpose of software is to turn data into?
- A. Web sites
 - B. Information
 - C. Programs
 - D. Objects
40. In MS-Word, Red colour wavy line under a word indicates
- A. Spelling and grammar mistake
 - B. copied word
 - C. Underline
 - D. Both (A) and (B)
41. A computer is of no use if does not have a
- A. Speakers set
 - B. Scanner
 - C. Operating system
 - D. None of these
42. The most important or powerful computer in a typical network is _?

- A. Desktop
 - B. Network client
 - C. Network server
 - D. Network station
43. What is a website?
- A. Space in the web
 - B. Web page
 - C. Places where you can find related web page
 - D. Home page
44. The first page of website is called_____?
- A. Home page
 - B. Web page
 - C. First page
 - D. Nice Page
45. What menu is selected to cut, copy, and paste?
- A. File
 - B. Insert
 - C. Edit
 - D. None of these

SECTION 03 ACHIVER'S SECTION

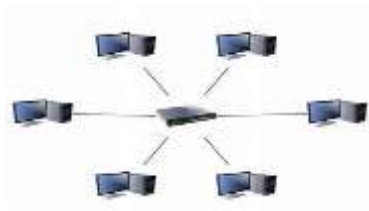
46. What is full form of UPS?
- A. Uninterrupted Pass Software
 - B. Uninterrupted Press Supply
 - C. Uninterrupted Power Software
 - D. Uninterrupted Power Supply
47. Who was the father of Internet?
- A. Chares Babbage
 - B. Vint Cerf
 - C. Denis Riche
 - D. Martin Cooper
48. Identify this Device



- A. OCR
- B. OMR
- C. MICR
- D. SCANNER

49. Identify this Network

- A. CAN
- B. PAN
- C. LAN
- D. MAN



50. Which program is run by BIOS to check hardware components are working properly while computer is turned ON?
- A. DMOS
 - B. POST
 - C. CMOS
 - D. RIP



GG RS LEARNING HUB PVT. LTD.

OLYMP QUIZ